



SONS IN RETIREMENT



Volume 2,
FEBRUARY 2010

**LAKE OF THE PINES
BRANCH 170**

**NEXT MEETING
FEBRUARY 3, 2010**

BIG SIR - LARRY SHELLEY

We started off another great year with our members donating more than \$500 to our SIRS Branch at the very first luncheon. We should be proud of this first group contribution, which should keep the club alive for close to half the year! For those who didn't have the green stuff this time, please come prepared to make your contribution at the next luncheon on February 3rd. The meatloaf and mashies lunch was superb - as close to what Momma used to make as we could allow. Our Not-So-Little SIR, Mel Pimentel, outshone himself with a great presentation from Janet Jerge of our local Sutter Auburn Faith Hospice Group. She touched many of us with the sincerity and graciousness of her remarks.

Plan to bring a guest next time. Someone who you enjoy being with is all we need and they will be gladly accepted here. Next month Mel's speaker will educate us on legitimate techniques for leaving your estate to your loved ones, and not to Uncle Sam!

See you there!



L-R Big SIR Larry Shelley with new members Ernie West, Roger Pope, Bob Krugman and Bart Nyman and Membership Chairman Phil Jones

MEMBERSHIP - PHIL JONES

Active Members 106
Inactive 14
New Members 4
Guests 1



SUNSHINE CHAIRMAN - STEVE PARKS

At our last meeting Jan. 6 Janet Jerge RN of Sutter Auburn Faith Hospital gave an excellent presentation on Hospice care. Everyone was in rapt attention as all of us will probably be involved with Hospice care for ourselves or family members in the future.

Doug Wilson is still having a tough time with atrial fibrillation with weakness and shortness of breath. He is hoping a new medication will help his condition.

Bob Sutton is recovering from knee replacement surgery.

Tom Healy is chief cook and bottle washer as his wife Jean is recovering from extensive foot surgery.

The Doctor called Mrs. Cohen saying "Mrs. Cohen your check came back." and Mrs. Cohen answered "so did my arthritis".

The doctor gave a man 6 months to live. The man said he couldn't pay his bill, so the doctor gave him 6 more months!

SUPPORT SIRS AT THE

ANNUAL

CHILI COOKOFF

FEBRUARY 27

**TICKETS ON SALE AT THE
CLUBHOUSE**

SAT JANUARY 30

FROM 9-11 AM



January speaker Janet Jerge, Quality Improvement Supervisor from Auburn Faith Hospice

LITTLE SIR - MEL PIMENTEL

Our speaker scheduled for February will be Dick Stoeltzing, previously Vice President of Wealth Management Services with A.G. Edwards & Sons Inc.

He's currently the Estate Planner for Trumark Financial Services. Maybe he will have some suggestions for our coming years to off set some of the downers some of us received in 2009.

Hope to see you there.



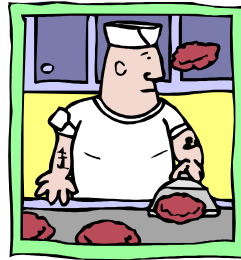
FREE LUNCH WINNER

AL CASH



GOLF : WOODY COWLES

The 2010 Golf Schedule is out. Check the LOP/SIRS website for the info. The first tourney is at Auburn Valley on April 19th. Check here for further info in the next newsletter.



FEBRUARY MENU

TIME 12:00
PRICE \$12

**BEEF TIPS
AND NOODLES**

COFFEE AND
DESSERT

VEGETARIAN MEAL OFFERED
ASK YOUR PHONE REP

TRAVEL - HAL WALLACE

7 day cruise of the Beautiful HAWAIIAN ISLANDS!



Sail aboard the **PRIDE OF AMERICA**
Roundtrip Honolulu, Oahu;
Including One Day Hilo, **TWO**
Days Maui, One Day Kona
and **TWO** Days Kauai

**PLUS ONE PRE-NIGHT AT
THE MARRIOTT-WAIKIKI!**

April 16 - 24, 2010
Escorted by: Hal Wallace



FEBRUARY BIRTHDAYS



- JOHN FRENCH PHIL JONES**
CARL HONEBEIN DICK PAPP
MACK LEETHAM
MEL PIMENTEL
DAVE ROSSEAU

BRANCH 170 OFFICERS

BIG SIR	LARRY SHELLEY	268 8369
LITTLE SIR	MEL PIMENTEL	268 3359
SECRETARY	LYNDEN LAIRD	268 2622
ASST SEC	DON JENKINS	268 0951
TREASURER	BILL MARTIN	269 2831
ASST TREAS	DON FRANZE	268 6330

BRANCH 170 DIRECTORS

STEVE MICHALAK	268 2419
JIM WILKINSON	268 6695
STEVE PARKS	268 3572
DON MILLER	268 9520
CHUCK MERCER	268 9302

STATE OFFICERS

PRESIDENT	DAVE REISER
VICE PRESIDENT	FLOYD KENDRICK
SECRETARY	GARY GRUBER
TREASURER	BOB MANNELL
REGION 9 DIRECTOR	MIKE NICKEY
AREA 33 GOVERNOR	HENRY IVERSON

HONORARY LIFETIME MEMBERS

BILL TIMBERS
STEVE MICHALAK

BRANCH 170 PAST BIG SIRS

ART LAFONTAINE	1994	DEL PRICE	1995
GENE TOPPER	1996, 1997	CLARENCE ROGERS	1998
JOHN O'HALLORAN	1999, 2000	TOM ANDERSON	2001
JOHN BREWER	2002	KEITH PLATT	2003
RON TRIMBLE	2004	STEVE MICHALAK	2005
DON MILLER	2006, 2007	JIM WILKINSON	2008
	PHIL JONES		2009

BRANCH 170 COMMITTEE MEMBERS

MEMBERSHIP	PHIL JONES	268 7714
ASST MEMBER.	BILL TIMBERS	268 0159
BULLETIN EDITOR	RICH HIBBS	268 3231
CHAPLAIN	ELMER CURTIS	268 6626
GOLF CHAIR.	WOODY COWLES	268 3624
ASST GOLF CHAIR.	JOHN BREWER	268 8826
CLOTHING	DOUG WILSON	268 9683
LOP NEWS	DOUG WILSON	268 9683
MUSIC CHAIR.	VERNE BAGBY	268 3405
ASST MUSIC CHAIR.	LARRY STRAIGHT	268 1406
SUNSHINE	STEVE PARKS	268 3572
PHOTOGRAPER	DALE ZINCK	268 2538
TRAVEL CHAIR.	HAL WALLACE	613 1035
CH7/PINES TIMES	JOHN O'HALLORAN	268 0402
PIANO	LARRY ELLIOT	268 1891

DECLARATIONS

RESPONSIBILITY CLAUSE All tours, trips and other activities arranged for or by SONS IN RETIREMENT, INC. and its branches are for the convenience of the members and their guests who desire to participate. SONS IN RETIREMENT, INC and its branches do not assume any responsibility for the well being or safety of the participants, their guests or their property in matters pertaining to said tours, trips or other activities.

TRAVEL EVENTS of four or more nights and ALL air and sea travel must be arranged through a travel agency and checks for such events must be made payable to the travel agency involved.

REGULAR MEMBERS missing three consecutive meetings without notifying their Attendance Committee Chairman giving a valid reason for not attending, or attending fewer than six meetings within the past twelve months may be notified by form letter Number Four of their membership termination. Certification of attendance at a meeting of another branch will be considered as a credit to their attendance record.

Access to the SIR State website is www.sirinc.org . Click on SIR HAPPENINGS to learn more about what is "happening" in your organization.